

Comparison

Technology	NB-UVB (310~313nm)	308nm Excimer Laser	308nm Excimer Light
Features	Narrow band, harmful to surrounding healthy skin	Single wavelength, highly effective, protect skin from radiation damage.	
Treatment	Slow effects. 40 treatments, a course of more than half year	Fast repigmentation. 15-20 treatments, a course of 1-3 months.	
Efficiency	Low energy, long irradiation time. Risk of Erythema, blister etc.	Safe. Small spot size, long irradiation time.	Safe. Adjustable big spot size, high energy, short irradiation time.
Treated area	Suitable for large area & full body. Invalid for marginal, joint area.	Effective for all body parts.	
Consumables	Some	Gas	No

Technical Parameter

Eximal Mini	
Output Source	Excimer light
Wavelength	308nm±2nm
Irradiation Time	1-140s
Output Energy	30-4200mj
Spot Size	4cm*4cm
Net Weight	1.7Kg
Package Size	365x318x400mm

GSD[®]
Global Skin Dermatologist

Skinnovation
We Breathe Skin

GSD[®]
Global Skin Dermatologist

Eximal Mini

Handheld 308nm Excimer Light

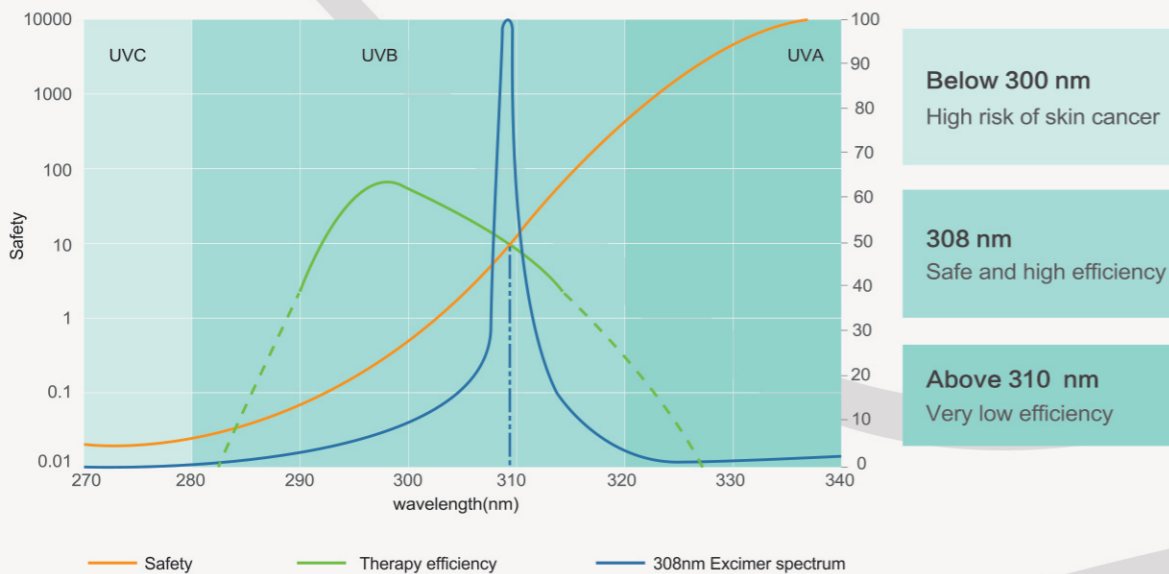


Restore · Revive · Reborn

Introduction

Eximal Mini is the 4th generation of GSD Eximal family. 308nm Excimer UV-light is a single wavelength light by using XeCl as illumination, to induce T cells apoptosis and improve pigment synthesis. It is regarded as the gold standard to treat vitiligo, psoriasis because of the excellent efficacy, short treatment course and less adverse reactions. As a highly cost-effective version, Eximal Mini provides a new option for dermatologists.

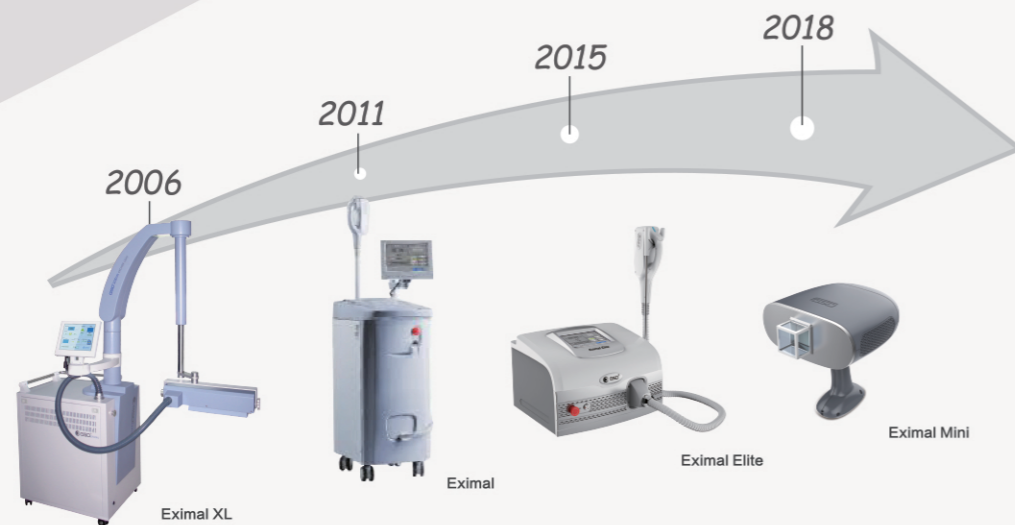
Why choose 308nm wavelength?



Advantages

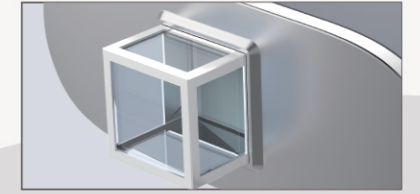
More Than 12 Years' Clinical Experience

GSD has developed 4 generations of 308 Excimer light machine since 2006, with 75% market share in domestic market. During past 12 years, GSD have done millions of clinical tests in hospitals and obtained a high cure rate. With years of research, Eximal mini has been developed into a handheld design, high mobility and easy for transportation.



German Lamp, 500 Hours' Lifespan

Eximal Mini equips with premium German lamp, which guarantees no energy attenuation. The energy would be stable and accurate to ensure an optimal clinical result. Best wavelength, high quality lamp and excellent results.



No Recharge, No Consumable

The device is installed with 500 hours illumination lifespan, no need any recharge card. Moreover, unlike the 308 excimer laser which needs to replace gas at high cost regularly, Eximal Mini doesn't require any gas. Low running cost, high ROI.



New Replacement under Warranty

During the warranty period, if any malfunction happens due to the material or manufacturing mistake, GSD would provide a new replacement for clients. Free maintenance.



Indications

- ✓ Vitiligo
- ✓ Eczema
- ✓ Psoriasis
- ✓ Dermatitis

Before and After Pictures

