

A white medical device, the Cooltech cryoadipolysis system, is shown against a white background. The device has a digital display screen at the top, the 'cooltech' logo in the middle, and a 'COCOON MEDICAL' logo below it. Two grey applicator cables are plugged into the front of the device. A blue circular graphic with the text 'TWO APPLICATORS' is overlaid on the bottom right of the device. To the right of the device, there is a block of text describing the device's capabilities.

cooltech

BODY CONTOURING

LOCALISED FAT REDUCTION

Cooltech is a
**CLINICALLY,
EFFECTIVE
AND SAFE**
device for
cryoadipolysis
treatments.

TWO
APPLICATORS

Its innovative system enables to simultaneously use 2 applicators, which provides a great profitability for your clinic as well as faster results for your patients.

ART OF COOL IN CRYOADIPOLYSIS TREATMENTS

2 SPECIAL COUPLERS

Designed with the purpose of allowing you to treat all types of patients. The couplers are for those patients with a smaller fat fold so the freezing process remains successful and the results outstanding.

6 ERGONOMIC APPLICATORS

Applicators designed to adapt to multiple body areas and all types of tissues.

2 SIMULTANEOUS APPLICATORS

The exclusive design of Cooltech allows you to work with two applicators simultaneously, decreasing treatment time and favouring the patient's comfort. In just one session, you will be able to reduce two areas and obtain a more visible and homogeneous effect.

Patented Cool Gel Pad -50°C Smart Contact

Protect your patient skin throughout the whole treatment with Cocoon Medical patented cryoprotectant membrane called Cool Gel Pad -50°C Smart Contact.





APPLICATORS & COUPLERS

6 Ergonomic applicators

Tailor the treatment to each individual patient.



CURVED
APPLICATOR



STRAIGHT
APPLICATOR



OVAL
APPLICATOR



TIGHT
APPLICATOR



DOUBLE
APPLICATOR



TINY
APPLICATOR

Combine 2 applicators on the same session:

STRAIGHT APPLICATOR:

Indicated for treating large areas on flat surfaces – Folds thicker than 35 mm – Lengths up to 14cm

CURVED APPLICATOR:

Curved areas – Folds between 25mm and 35mm – Lengths of 15,5cm

DOUBLE APPLICATOR:

Treat full abdomen in one session – Folds between 25mm and 35mm – Lengths of 19,8cm

TIGHT APPLICATOR:

Narrow fat folds – Folds between 25mm and 35mm – Lengths of 12cm

TINY APPLICATOR:

Small and difficult to access areas – Fat folds over 10mm – Lengths of 6,9cm

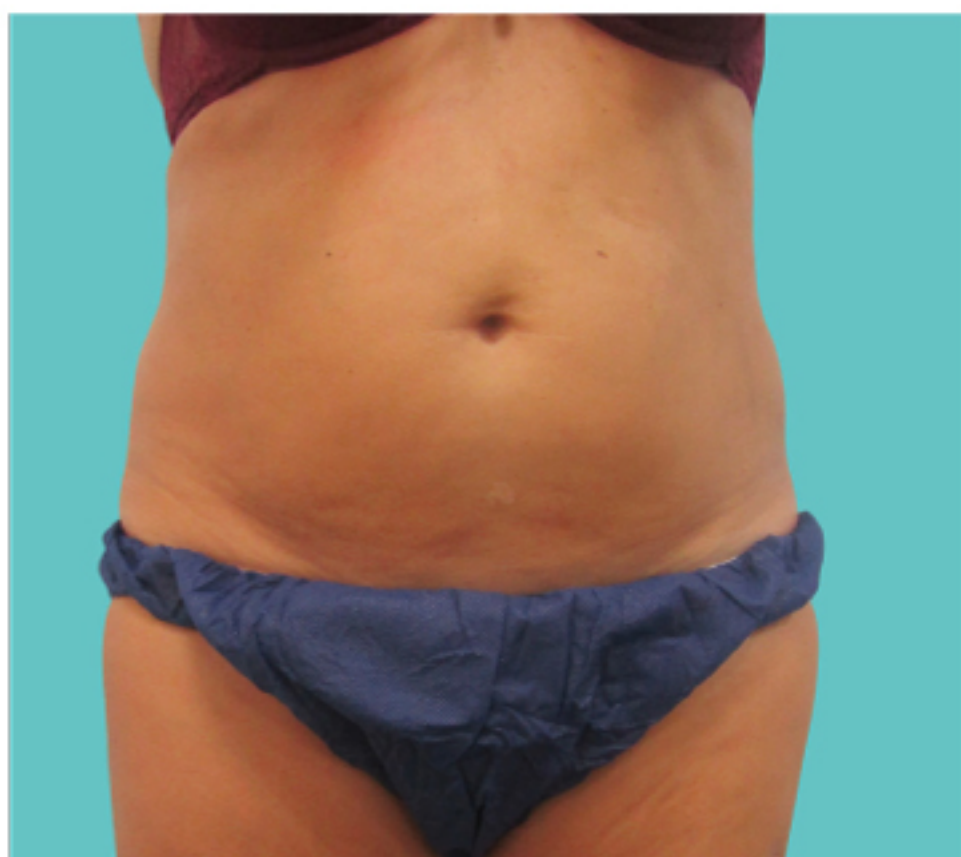
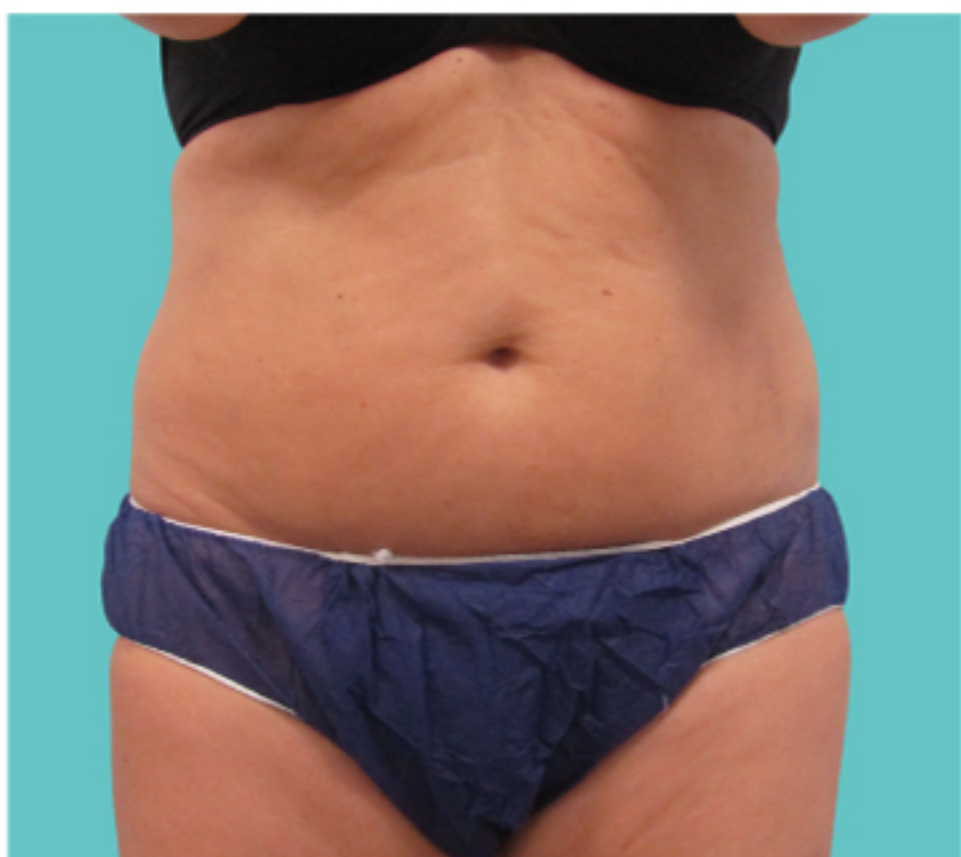
OVAL APPLICATOR:

With large areas and hardened large areas and hardened fat in which suction is difficult. Ideal for legs and flanks – Areas of 10 x 14,2cm

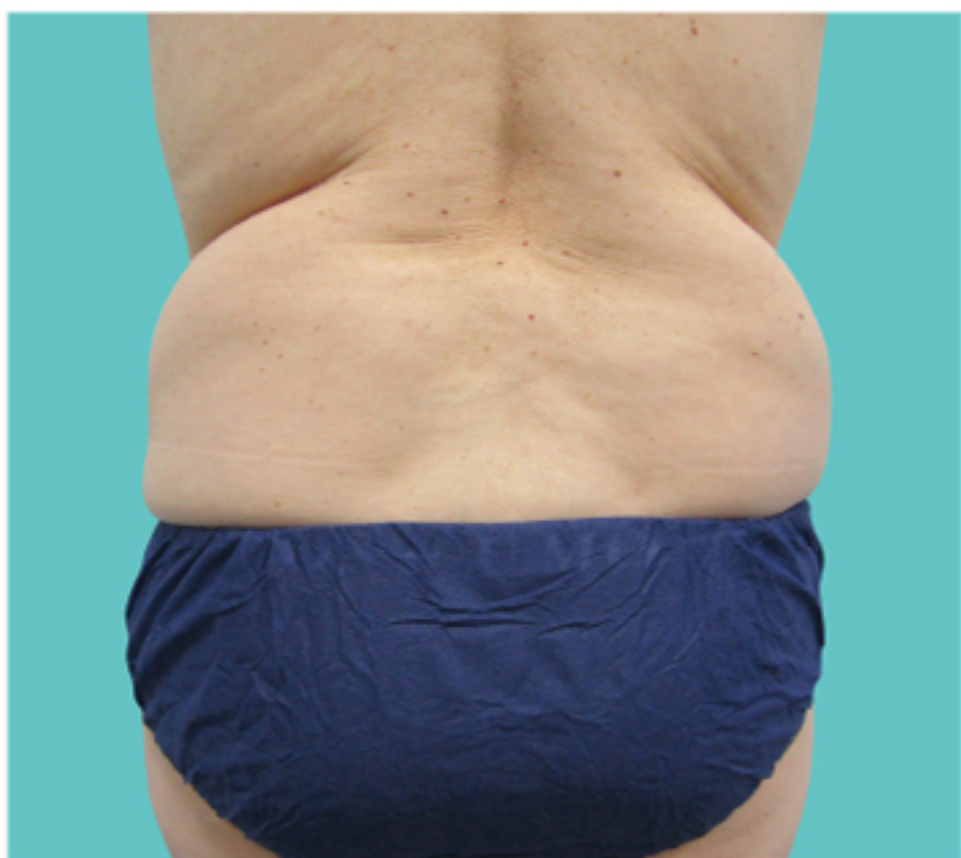
Before & After

UNPARALLELED TREATMENT EXPERIENCE

Suitable for all types of tissues and areas,
enhanced safety, superior results, no downtime.



3 sessions after Cooltech treatment.



1 session after Cooltech treatment.



1 session after Cooltech treatment.
Courtesy of Dr. Tarico & Dr. Perrotta, Italy.



1 session after Cooltech treatment.